

St Albans Office  
10 High Street, St Albans  
Herts AL3 4EL  
01727 228428  
stalbans@cassidyandtate.co.uk

Marshalswick Office  
59 The Quadrant, St Albans,  
Herts AL4 9RD  
01727 832383  
marshalswick@cassidyandtate.co.uk

Wheathampstead Office  
39 High Street, Wheathampstead,  
Herts AL4 8BB  
01582 831200  
wheathampstead@cassidyandtate.co.uk

Knightsbridge Office  
45 Pont Street, Knightsbridge  
London SW1X 0BD  
020 7629 9966  
26@theknightsbridgeoffice.co.uk

Cassidy  
& Tate  
Your Local Experts



Award Winning Agency

WATFORD ROAD

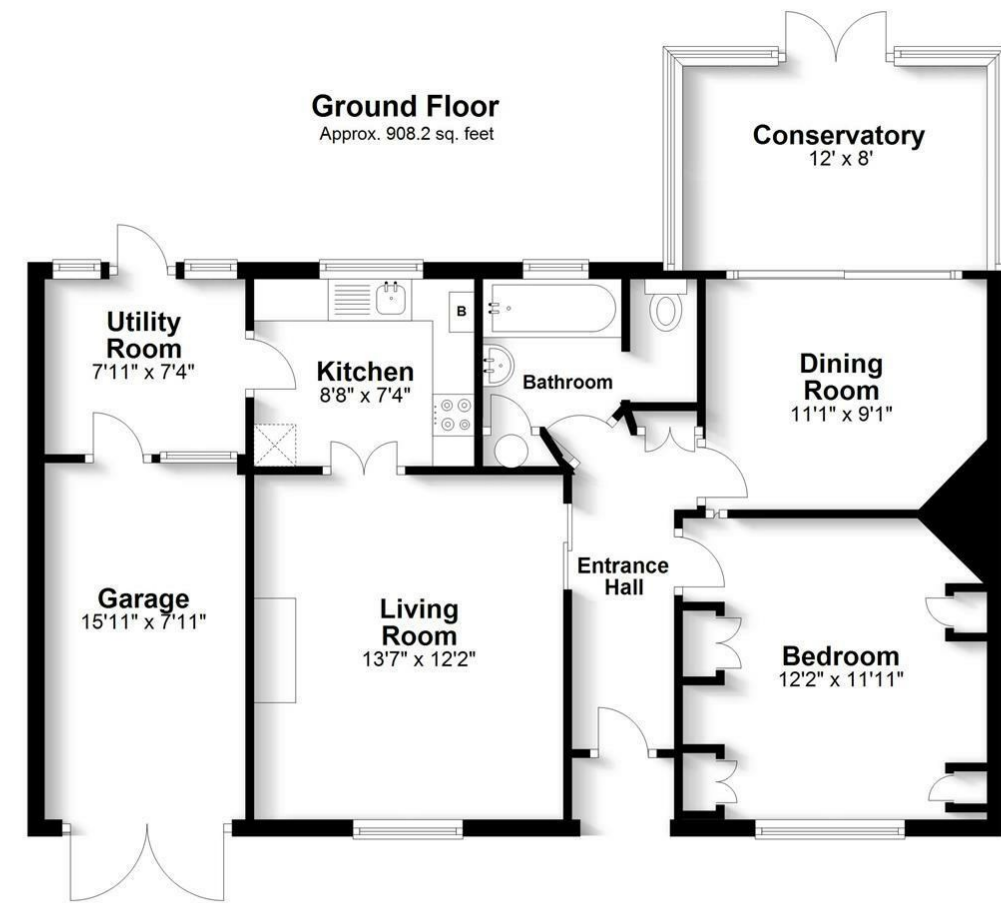
ST. ALBANS

AL2 3JZ



## All The Ingredients Needed For A Fabulous Lifestyle

This is a pretty detached two bedroom bungalow that is now needing modernisation or has potential for further development, subject to planning. Situated on a good size plot with a very pretty garden, in a highly convenient location. Watford Road is positioned in the sought after Chiswell Green area of St. Albans which offers ease of access to the M1 / M25 motorway networks, the vibrant and extensive shopping and leisure facilities of the city centre, good local amenities and excellent schools. There are some local shops nearby plus a pretty Public House and a Drs Surgery.



Total area: approx. 908.2 sq. feet

Produced for Cassidy & Tate Estate Agents  
For guidance purposes only. Not to scale.

Plan produced using PlanUp.



Cassidy & Tate have taken all reasonable steps to ensure the accuracy of the details supplied in our marketing material however, details are provided as a guide only and we advise prospective purchasers to confirm details upon inspection of the property. Cassidy & Tate will not be held liable for any costs which are incurred as a result of discrepancies.

# Perfect Fusion of Location

## And Way of Living

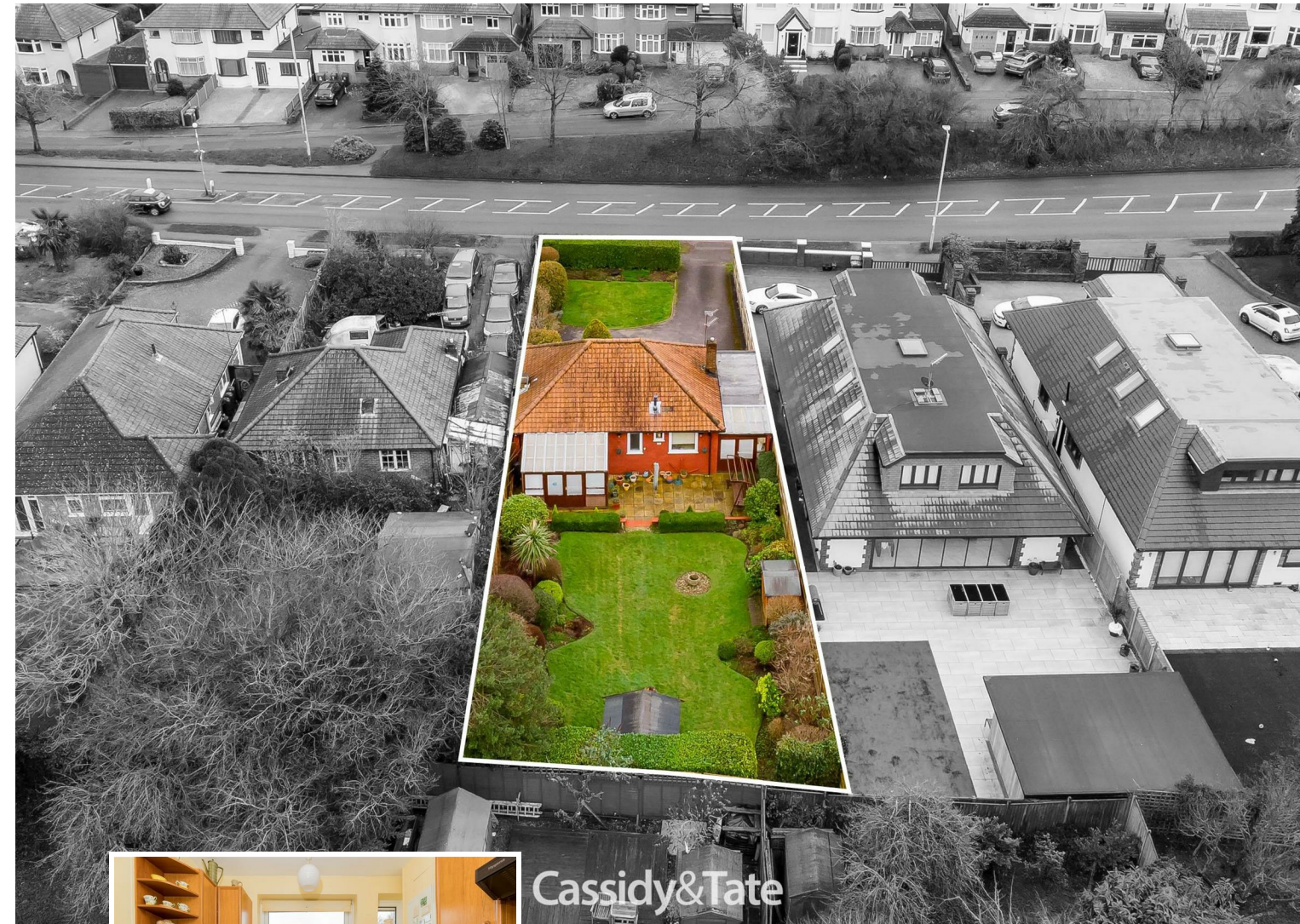
### Why Cassidy & Tate

Cassidy & Tate are a fully independent estate agent who have developed unparalleled understanding on how people want to buy, sell and rent property within the residential property market in Hertfordshire and its surrounding areas. We are able to accommodate your individual requirements and deliver to you a more personalised service, tailored to your home buying, selling and letting needs.

We also have many years of experience in land and new homes and the pleasure of working alongside many reputable house builders and developers in Home Counties and Greater London. Whether you are looking to acquire or sell development opportunities and land, wish to purchase or sell a newly built or refurbished property, or require a site valuation and marketing advice we can help.

### Your Local Property Experts

As one of St. Albans leading estate agents we work relentlessly to ensure our valued customers receive the exceptional service they deserve at all times. We epitomise not only professional estate agency knowledge, but a dedication to integrity and responsiveness to every client. The Cassidy & Tate team will be available to you when in need to help overcome any stressful situations that may arise. We are here to offer you valuable and honest advice when needed so that you can navigate the best path through the process. We know the marketplace, the buyers, the sellers and neighbourhoods, but most importantly we know how to put our clients' needs first. Our state of the art sales tools, modern technology and our own in-house fully independent Mortgage Broker is here to make your journey easier and more direct to your final goal. At Cassidy & Tate you will be in control of your sale or purchase and we will help you get the best result possible



Cassidy&Tate

### Specialists in Bespoke Properties

- Two Bedrooms
- No Onward Chain
- Convenient Location
- Local Shops Nearby
- Detached Bungalow
- Further Potential
- Access To Motorway Network
- Drs Surgery Nearby

Energy Efficiency Rating	
Current	Potential
Very energy efficient - lower running costs	
(92 plus) <b>A</b>	
(81-91) <b>B</b>	
(69-80) <b>C</b>	
(55-68) <b>D</b>	
(39-54) <b>E</b>	
(21-38) <b>F</b>	
(1-20) <b>G</b>	
Not energy efficient - higher running costs	
	<b>86</b>
	<b>57</b>
EU Directive 2002/91/EC	
England & Wales	

Environmental Impact (CO <sub>2</sub> ) Rating	
Current	Potential
Very environmentally friendly - lower CO <sub>2</sub> emissions	
(92 plus) <b>A</b>	
(81-91) <b>B</b>	
(69-80) <b>C</b>	
(55-68) <b>D</b>	
(39-54) <b>E</b>	
(21-38) <b>F</b>	
(1-20) <b>G</b>	
Not environmentally friendly - higher CO <sub>2</sub> emissions	
EU Directive 2002/91/EC	
England & Wales	



Cassidy&Tate



Cassidy&Tate



Cassidy&Tate



Cassidy&Tate